

In the name of good



Mr.Ahmad bozourg rad (engineer)

- Principal and the head of gisement surveying consulting engineer corporation.
- Has a baccalaureate of surveying from surveying vniversity at 1972.
- Management of surveying institue of national cartographic centre .
- The expert of researches in national cartographic centre.
- The expert of technical control in national cartographic centre.
- The expert of achievement photogrammetric maps in national cartography centre.
- The boss of iranian surveyors management association.
- One member of iranian surveyors consulting association.
- One member of consulting engineers judyement association.
- One member of consulting engineers dues association.
- One member of iranian technical and engineeringm services justify corporation.
- Competent certificate for consulting services from plan and management centre of iran(assistant technical affairs).
- One member of asia international development researches and engineering corporation at management association(afghanestan reconstruction committee from iranian consulting engineering society).



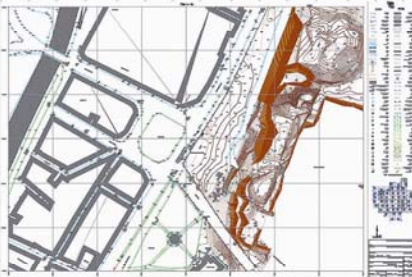
● Terrestrial Surveying



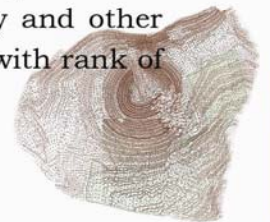
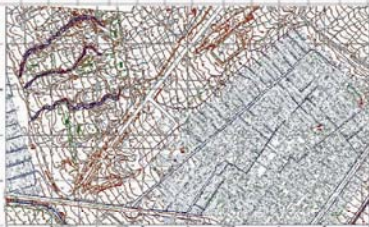
In this Part , creating of map with experienced engineers and technician by advanced And accurate device (e.g two-frequency satellite positioning facilities and total stations with laser). this section acts in different part.



● Making topographic maps from district and city (block) in this case we describe about some Projects.



- Track of fuel for imam-khomeini international airport.
- Mehe abad airport.
- Route of lordegan faradambeh and ramehrmez-seyedoon.
- Highway between takestan- tabriz.
- Kermanshah-hamil- iylam highway (karball way).
- Charmshahr and salla fchegan industrial city and other projects that you can observe in gisement site with rank of provinces and employers.

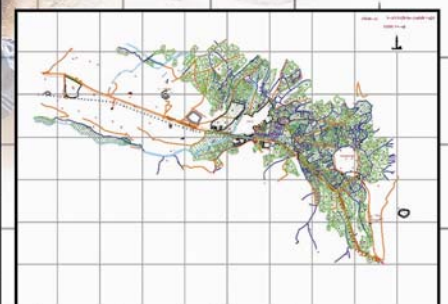
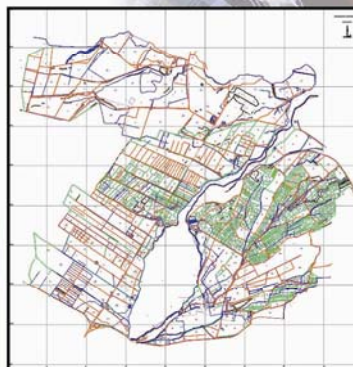


● Making cadastral maps (cadastre) agricultural fields and city cadastre.

Some projects in this part:

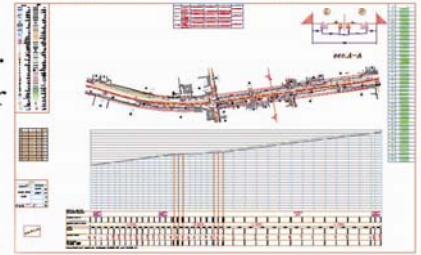
- Villages of gillan (fooman ,some sara , tallesh , roodbar).
- Ghoum castle plain.
- Zar khoosheh arak.
- shahriyar and robot karim.
- fields of cooperative society in gillan.
- Vicinity of mehr abad airport.

You can visit all projects in this site.



● Surveying and layout for routes and pipe lines and energy transferring tracks.

- Surveying and layout routes between najaf abad – damaneh.
- Surveying and layout routes between kallat –sarayan other projects are existed in gisement site.



● Mahing tunnel and mine maps.

- Maps of azadi tunnel at route between iylam – hamil.
 - Topographic maps with 1:500 (scale) of poul sefid-ghaem shahr.
- Other projects are existed in this site.

● Microgeodesy and movement of break.

- Tehran zamzam factory.
- Saker building in chahar dongeh.
- District to municipality building.

● Hayout excavation platform and oil or gas wcll and fuel trasfering stations.

- Six stations.
 - Reed-bed.
- You can obseve other projects in the site.



● The operation for terestrial control points in photogrammetry(stereo) and remoto sensing.

- Terestrial contro points in bahraman , hashtrood , tabriz , bostan abad, gharchak , varamin Tourghabeh, shandiz, pakdasht and mahidasht.

● Review and vpdating the old maps..

- Surveying in gas trasfering grid ouskoo-sardarood.
- Maps are achieved by gas trasfering grid in zenooz , yamchi, doozdoozan.
- Maps of gas transferring net from marand other projects are existed in gisement site



● **Surveying from historical area for cultural heritage , handicrafts and tourism organization.**

In this case , operate for making plan and plot and GIS model from historical or cultural traces with new technologic surveying.

Special projects in this occasion, cause for making topographis maps. For example.

- Takhte- soleiyman at western azerbaijan is historical sites.
- Historical caste in kharanegh at yazd.
- 160 Historical districts at razavi khorasan.
- Ancient place in silk kashan by 600-year antiquity.
- Historical place in dare shahr at iylam.
- creating the topographic maps , cadastre , representotion of shoosh historical area.

Historical area of takhte – soleyman.

Three-dimension madel.

Anahita temple and ivan khoosrou.

Historical site of kharanegh castle



Facilities:

- Every kind of total stations (Leica).
- Two frequency satellite positioning system(GPS).
- One frequency satellite positioning system (GPS).
- Niveo.
- Every computers for usage from web.
- Every cars are equipped for surveying areas.

● **Quality:**

This corporation represents the ISO9001:2000(Quality management system) for expounding quality for activities and representative services and attraction of customers and all other bencfiary persons. This unit operates control over appropriate execution for standard necessities, for providing all affairs about quality management system. This unit includes.



SURVEYING CONSULTING ENGINEERS
GISEMENT

Public Relations:

This unit operates direct connection with employers and investigation for their complaints and offers and representation to manager for expanding the level of quality in services , and informs employees about providing needs of costumers services of corporation.

The other tasks of this section are publication interior magazine monthly for expanding the employees information about same corporation affairs and new researches of surveying and one base for sending and taking messages because of continuous contact among employees and employers.

Training section

This section constantly teaches every science that is related to surveying or other new softwares with appropriate resources or facilities by experienced masters

Geographic information system (GIS) and remote sensing(RS).

In this section, Experienced experrts represent every sort of maps , comparative models , three-dimensional models , orthophoto and so on , that all of them are created by every professional softwares. RS section operates all land USE maps and land cover maps for various application of researches , agriculture or road construction and so on. at GIS unit , special base about geographic information for available digital maps with relative softwares are produced. Some projects in this case are:



-Making land USE and landcover maps , total plan for landuse and flood in golestan for 1988 and 2002 years with landsat TM.

And landsat ETM+ satellite images.

-Producing iran satellite image map with creating flight model for throughout gas pipes by order of iran gas national organization.

-Creating large.scale maps 1:5000 the length of them is 80 kilometres for studying all reason of flood in kallaleh at golestan.

-Creating every kind of sutellite image maps and making orthophoto map of bam.

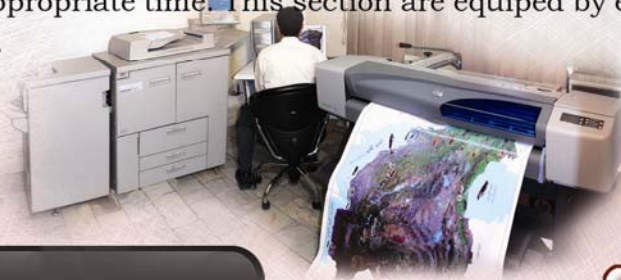


● Calculates , plot and edition(edition and cartography)

In this section , cartograph and plotter makes maps with high – speed computere and calculates and plots with softwares like auto cad , microstation , SDRMAP.

Maps are produced with legal instruction from national cartoyraphic centre.

Technical section, that is one member of this part represents high amount of recording copy (Hard copy) to employers in appropriate time. This section are equipped by every complete facilities for copy and producinycy of maps.



Facilities:

- Every wide chromatic plotter for AO papers.
 - Chromatic or mono- chromatic laser printers.
 - Digital copy facility.
 - Accurate computers for plot. And edition of map or calculates.
- Creating maps with aerial Images (photo grammetry).

In this part , creating maps with aerial images experienced experts produce every digital maps in different scales with DGN, DXF, DWG standard format. All facilities are equipped by digital transferring devices like info , paradeyes, photomode. Some projects in this occasion

Are:

- Pakdasht , gharchak and varamin area.
- Torghabeh, shandiz area in razavi khorasan province.
- Track of water between karaj and tehran. The length of track is 30 kilometres.
- Bahraman area in kerman province.
- Bostan abad area in eastem azerbaijan province.
- Tabriz area and other projects are existed in the web-site of Gisement.

Facilities:

Every digital transferring device for making maps from aerial image and other advanced system for edition of maps.



Gisement corporation was established at 4th january of 1975 and in 1981, got competence degree from plan and budget organization. At this time , it is equipped by perfect surveying facilities about basis(1) of terrestrial surveying and basis (2)of terrestrial surveying and photogrammetry by plan and management organization. This corporation operates terrestrial surveying, remote sensing , photogrammetry,topography,layout for route,satellite positioning system,making map from gas transferring grid(net),mining surveying and cadastre.



Address: no,14,sabzeh zar alley , sargoard shahid AliRezayee de hghan avenue
 azadi street , azadi square , tehran
 Telephone and fax: 66027715, 66041206,66055755,66019155,66000530, 66000694
 INFO@ GISEMENTIRAN.COM
 WWW.GISEMENTIRAN.COM